

# **NOTICE TO MARINERS**

## **DUDGEON OFFSHORE WIND FARM CONSTRUCTION WORKS**

**NOTICE IS HEREBY GIVEN** that construction activities are in progress at the Dudgeon Offshore Wind Farm and Export Cable Corridor.

### **Foundation Installation**

The OLEG STRASHNOV Heavy Lift Vessel, operated by Seaway Heavy Lifting, will install the 67 Wind Turbine Generator foundations and the substation topside in the wind farm area. The OLEG STRASHNOV will be supported by anchor handling tugs. This operation is on-going and expected to be completed by end-August 2016.

### **Cable Installation**

The NDEAVOR cable laying vessel, operated by VBMS, will install inter-array cables to connect wind turbines to the offshore substation. This operation is ongoing and expected to be completed by mid-September 2016.

The Grand Canyon will be performing burial of the Inter Array Cables. This operation is expected to start early August 2016

The vessel Rockpiper will perform rock installation for scour protection and cable protection around the Substation location. This operation is expected to be performed late July /early August 2016.

Topaz Installer is performing export cable repair. The work is ongoing and will be completed by end of July 2016.

### **Guard vessel**

The Adventure will act as a guard vessel to safe guard the wind farm area. During port calls, Advance will be her back-up. Adventure will be on location from end April expected to be completed late October.

The export cable shall be spliced and the Rachael S will act as guard vessel at the cable jointing location from mid April 2016.

The vessel Vestland Cygnus will be used for personnel accommodation at the Dudgeon field area, and for transfer off personnel based on “walk to work” onto TP’s and the OSS. Vestland Cygnus will be on location from early July until late 2016.

Ndeavour and Vestland Cygnus are supported by personnel transfer vessels

### **GENERAL**

**MARINERS ARE HEREBY INFORMED** that a statutory construction Safety Zone (exclusion zone) is in place at the wind farm site. This safety zone is defined by:

A 500 metres radius around each wind turbine, offshore sub-station and their foundations whilst work is being performed as indicated by the presence of construction vessels; and

A 50 metres radius around each wind turbine, the offshore sub-station platform and associated foundation structures installed, complete or incomplete but waiting to be commissioned as part of the Dudgeon offshore wind farm where personnel are present on, or are being landed on or being taken from, the structures.

All vessels will exhibit appropriate lights and shapes prescribed by the International Regulations for Preventing Collisions at Sea.

**ALL VESSELS ARE REQUESTED** to give all construction and support vessels a wide berth.

**MARINERS ARE ADVISED** to navigate with caution and keep continued watch on VHF Ch. 16 when navigating the area.

A further notice to mariners will be issued when these works are completed, expected autumn 2016.

Please direct any enquiries regarding this notice to:  
Statoil Wind Control Centre - [statoilwindcontrol@statoil.com](mailto:statoilwindcontrol@statoil.com)

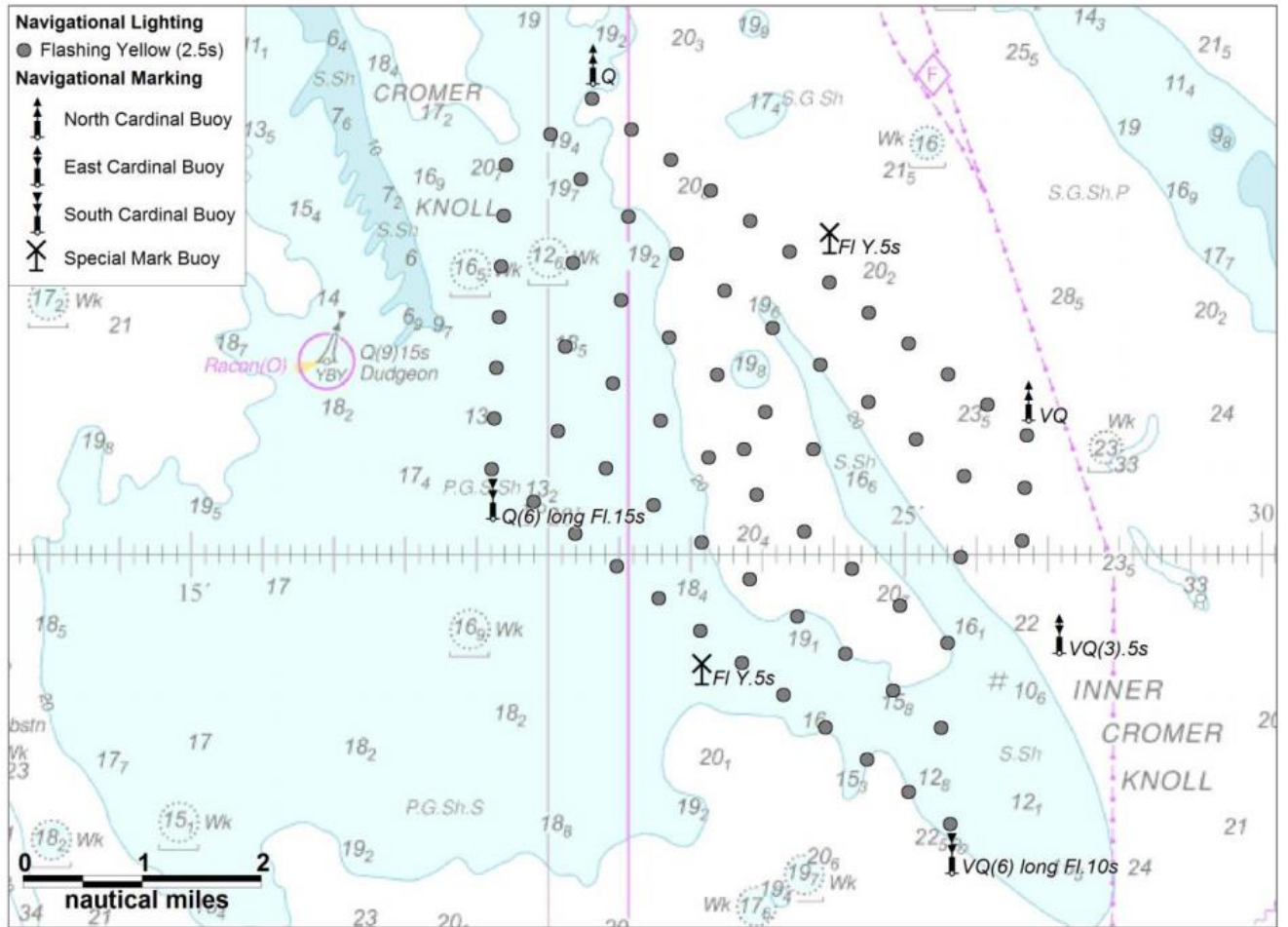
A copy of this notice can also be found at:

<http://dudgeonoffshorewind.co.uk/news/notice-to-mariners>

## SITE DETAILS

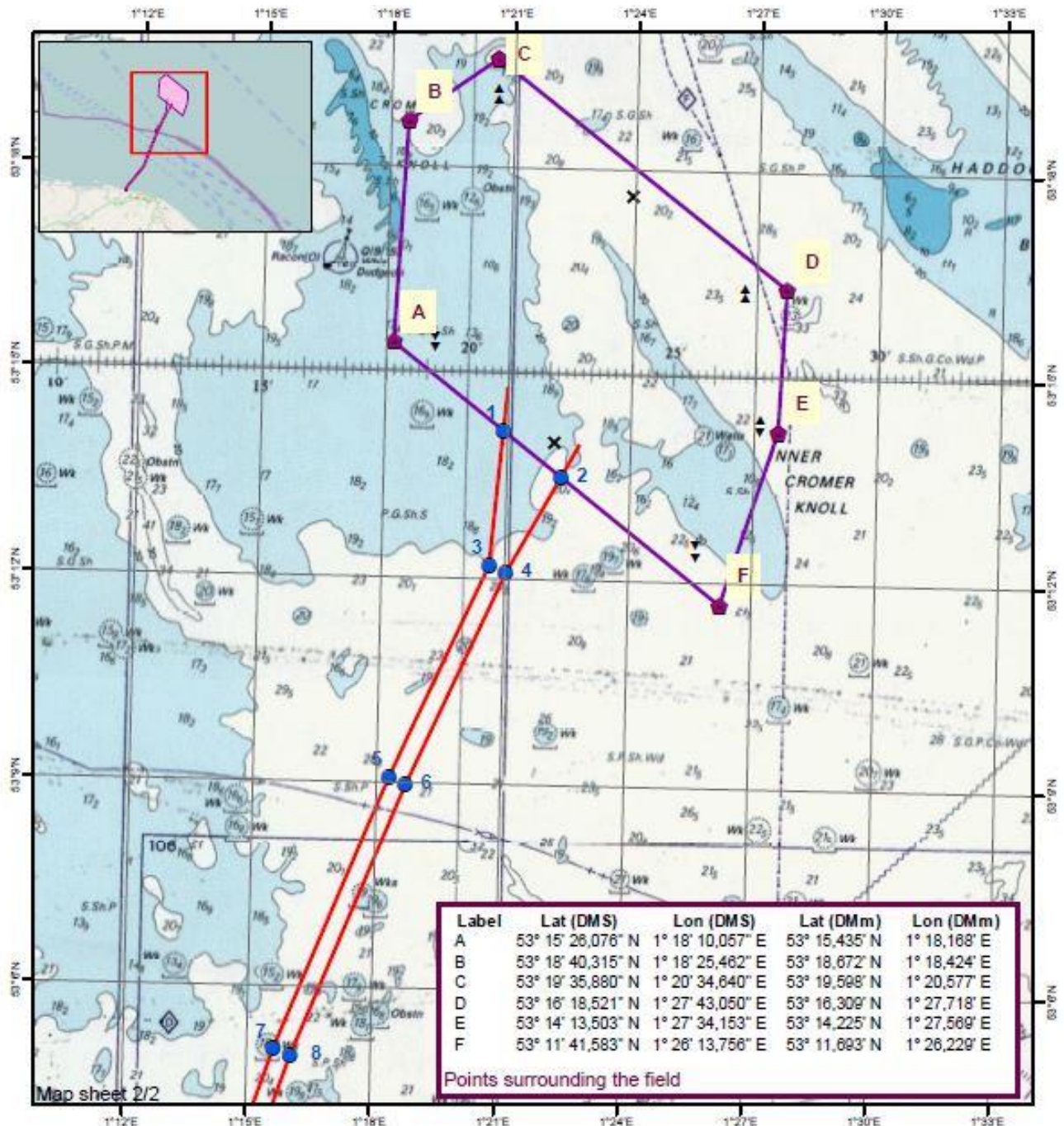
Position of Navigation Buoys demarcating the Dudgeon Offshore Wind Farm site

Mark	Location	Name	Latitude	Longitude	Status	Flash Character	Code	Range
North Cardinal	NW Cardinal	<b>N-DOW</b>	<b>53° 19,102' N</b>	<b>1° 20,592' E</b>	Temporary	Q	601	5nm
Special Mark	Special Mark North	<b>DOW - SM - N</b>	<b>53° 17,631' N</b>	<b>1° 23,919' E</b>	Temporary	Fl.Y.5s	328	5nm
North Cardinal	North East Cardinal	<b>NE - DOW</b>	<b>53° 16,277' N</b>	<b>1° 26,691' E</b>	Temporary	VQ	501	5nm
East Cardinal	East Cardinal	<b>E- DOW</b>	<b>53° 14,320' N</b>	<b>1° 27,123' E</b>	Temporary	VQ(3).5s	508	5nm
South Cardinal	SE Cardinal	<b>S - DUDGEON</b>	<b>53° 12,470' N</b>	<b>1° 25,617' E</b>	<b>Permanent</b>	VQ(6) long Fl.10s	516	5nm
Special Mark	Special Mark South	<b>DOW - SM - S</b>	<b>53° 14,012' N</b>	<b>1° 22,132' E</b>	Temporary	Fl.Y.5s	328	5nm
South Cardinal	SW Cardinal	<b>SW - DOW</b>	<b>53° 15,451' N</b>	<b>1° 19,188' E</b>	Temporary	Q(6) long Fl.15s	631	5nm



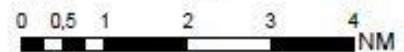


## Wind farm area and cable corridor north












Label	Lat (DMS)	Lon (DMS)	Lat (DMm)	Lon (DMm)
1	53° 14' 10,494" N	1° 20' 53,200" E	53° 14,175' N	1° 20,887' E
2	53° 13' 30,784" N	1° 22' 18,795" E	53° 13,513' N	1° 22,313' E
3	53° 12' 12,063" N	1° 20' 36,508" E	53° 12,201' N	1° 20,608' E
4	53° 12' 5,472" N	1° 21' 1,112" E	53° 12,091' N	1° 21,019' E
5	53° 9' 4,426" N	1° 18' 17,288" E	53° 9,074' N	1° 18,288' E
6	53° 8' 58,127" N	1° 18' 42,081" E	53° 8,969' N	1° 18,701' E
7	53° 5' 4,975" N	1° 15' 38,228" E	53° 5,083' N	1° 15,637' E
8	53° 4' 59,401" N	1° 16' 3,461" E	53° 4,990' N	1° 16,058' E

Points along export cable corridor

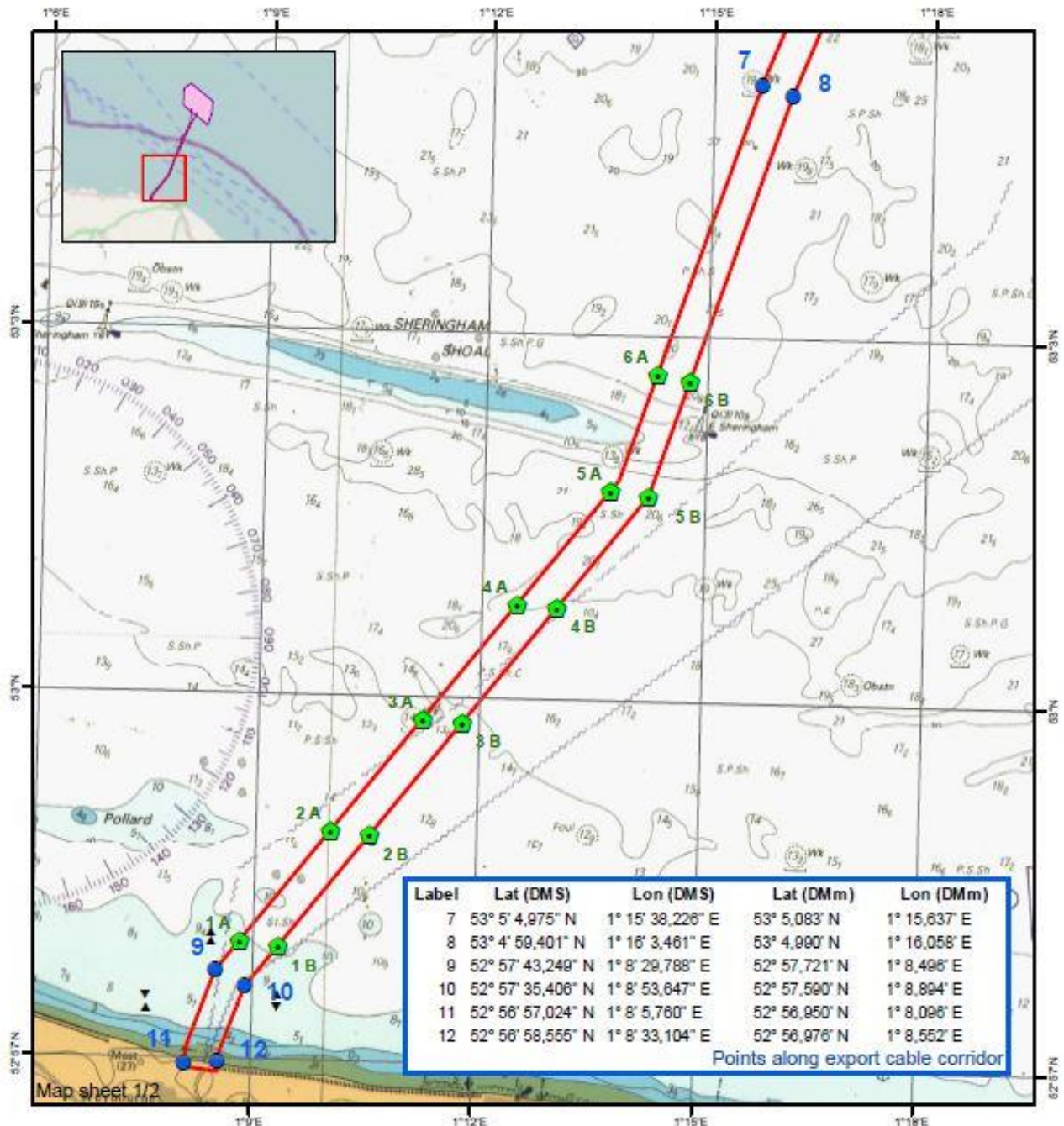


### Legend

-  Fields Boundary Corner points
-  Field Boundary added 1000m
-  Survey Area - Export Cable, points
-  Survey Area - Export Cable
-  East Cardinal
-  North Cardinal
-  South Cardinal
-  Special Mark
-  West Cardinal

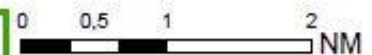


## Cable corridor south and export cable landfall







Label	Lat (DMS)	Lon (DMS)	Lat (DMm)	Lon (DMm)
1 A	52° 57' 57,894" N	1° 8' 48,791" E	52° 57,965' N	1° 8,813' E
1 B	52° 57' 55,481" N	1° 9' 19,702" E	52° 57,925' N	1° 9,328' E
2 A	52° 58' 53,227" N	1° 10' 0,633" E	52° 58,887' N	1° 10,011' E
2 B	52° 58' 51,451" N	1° 10' 32,388" E	52° 58,858' N	1° 10,540' E
3 A	52° 59' 49,079" N	1° 11' 13,218" E	52° 59,818' N	1° 11,220' E
3 B	52° 59' 47,880" N	1° 11' 45,752" E	52° 59,798' N	1° 11,763' E
4 A	53° 0' 46,724" N	1° 12' 28,201" E	53° 0,779' N	1° 12,470' E
4 B	53° 0' 45,434" N	1° 13' 0,623" E	53° 0,757' N	1° 13,010' E
5 A	53° 1' 43,601" N	1° 13' 42,256" E	53° 1,727' N	1° 13,704' E
5 B	53° 1' 41,112" N	1° 14' 13,136" E	53° 1,685' N	1° 14,219' E
6 A	53° 2' 41,270" N	1° 14' 18,352" E	53° 2,888' N	1° 14,306' E
6 B	53° 2' 38,543" N	1° 14' 45,145" E	53° 2,842' N	1° 14,752' E

Points marking 1NM intervals from shore



### Legend

-  1 NM Interval from shore
-  Survey Area - Export Cable, points
-  Survey Area - Export Cable
-  East Cardinal
-  North Cardinal
-  West Cardinal

## GUARD VESSEL LOCATION

**Cable splicing** location is defined by the cable end and clump weights at the following locations:

Cable End: 381789 E, 5877403 N / 53° 01.984' N, 001° 14.229' E  
Clump Weight: 381808 E, 5877449 N / 53° 02.009' N, 001° 14.244' E

Holdback anchor / Marker buoy for initiation clump weight  
Clump Weight: 381582 E, 5877163 N / 53° 01.853' N, 001° 14.048' E  
Cable End: 381621 E, 5877206 N / 53° 01.876' N, 001° 14.082' E

## KEY CONSTRUCTION VESSEL CONTACT DETAILS

### Oleg Strashnov



**Callsign: 5BNL2**

**Bridge phone : +31 88 732 92 31/32**

**Immarsat F77 +870 765 050 118**

**Email [oleg-strashnov@shl.com.cy](mailto:oleg-strashnov@shl.com.cy)**

### Ndeavour



**Callsign: 5BVG3**

**Bridge phone : +87 0773 187 969 / Vsat. +31 10 713 05 28**

**E-mail: [NDEAVOR-captain@boskalis.com](mailto:NDEAVOR-captain@boskalis.com)**



## Grand Canyon



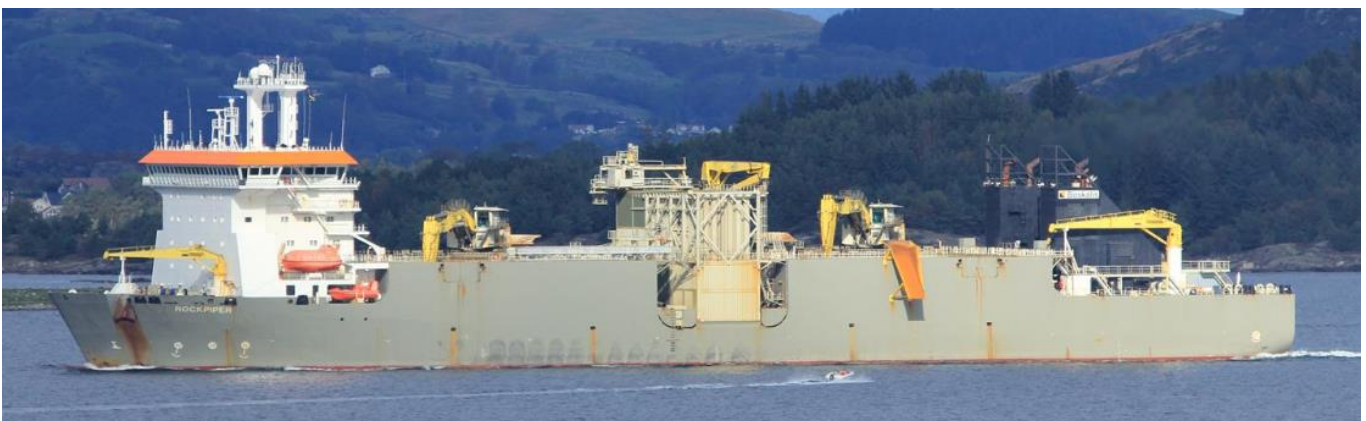
**Callsign: 3EVR8**

**Bridge phone: V-sat: +47 22 03 44 99**

**Captain: V-sat +47 21 03 45 00 / Immarsat +870 773205466**

**E-mail : [master@grand-canyon.no](mailto:master@grand-canyon.no) / [Gc1bridgesupt@helixesg.com](mailto:Gc1bridgesupt@helixesg.com)**

## Rockpiper



**Callsign: 5BML3**

**Bridge phone: +31 10 71 309 97, GSM +47 95 09 30 97, I  
NMARSAT +87 07 73 18 79 51**

**Client Office: +31 10 71 309 95**

**E-mail : [rockpiper-captain@boskalis.com](mailto:rockpiper-captain@boskalis.com)**

## Adventure



**Callsign: 2IFE4**  
**Bridge Phone: TBA**  
**E-mail : [adventureGS@gmail.com](mailto:adventureGS@gmail.com)**

## Rachael S



**Callsign: 2FSB**  
**Bridge Phone: GSM, mob 07880581433, SAT.TEL: 0088 1622469422**  
**E-mail : [rachaelsgy305@e-catch.co.uk](mailto:rachaelsgy305@e-catch.co.uk)**



## Advance WY77



**Callsign: MZNA6**

**Bridge Phone: Sat. Phone: 00870773231090/01947 240024**

**E-mail : [adventureGS@gmail.com](mailto:adventureGS@gmail.com)**

## Topaz Installer



**Callsign: J8B2641**

**Bridge Phone: v-sat +870 773255963 / Sat B+870 337726510**

**E-mail : [Topaz-installer@topaz-marine.com](mailto:Topaz-installer@topaz-marine.com)**

## Vestland Cygnus



**Callsign:** C6BW7

**Bridge Phone:** VSAT.TEL: +4723677230; +4723677230 / GSM: +47 41 43 02 07

**E-mail :** [captain.cygnus@vestlandoffshore.no](mailto:captain.cygnus@vestlandoffshore.no) ; [bridge.cygnus@vestlandoffshore.no](mailto:bridge.cygnus@vestlandoffshore.no)